

**Appendix 2: Revised Draft Greater Nottingham Strategic Plan
Policies Map Changes, March 2025**

Greater Nottingham Strategic Plan



Policies Map Changes

March 2025

GREATER NOTTINGHAM STRATEGIC PLAN

Policies Map Changes

March 2025

Contents

Policies Map Changes for Broxtowe Borough Council	3
Policies Map Changes for Nottingham City Council	10
Policies Map Changes for Rushcliffe Borough Council	13

Introduction

Please note that Gedling Borough has made the decision to withdraw from the Greater Nottingham Strategic Plan. The Strategic Plan no longer contains any policies applicable to Gedling Borough and therefore references to Gedling Borough in this document have been updated to reflect this.

Local planning authorities must maintain an adopted policies map which shows geographically the application of policies and designations in the adopted development plan. The current adopted policies map for the Greater Nottingham Councils are:

- Broxtowe Borough Council Part 2 Local Plan adopted on 16th October 2019.
- Nottingham City Land and Planning Policies Document adopted on 13th January 2020.
- Rushcliffe Borough Council Local Planning Document Policies Map adopted on 8th October 2019.

The regulations require that the policies map is revised each time that a development plan document is adopted and as such consideration is being given to changes that will need to be made to the policies map when the Greater Nottingham Strategic Plan is adopted.

Policies Map Changes for Broxtowe Borough Council

Broxtowe Borough Council has a two-part local plan. The Aligned Core Strategy, adopted 17th September 2014, allocated sites for strategic development. Alongside preparation of the Aligned Core Strategy, Broxtowe Borough Council published a document¹ to identify how the adopted policies map in place at the time (comprising part of the Local Plan) would be altered by the strategic allocations contained within its policies and designations.

Broxtowe Borough Council Part 2 Local Plan

The Part 2 Local Plan includes the current policies map, which shows the locations of policies and designations contained in the Plan

Greater Nottingham Strategic Plan

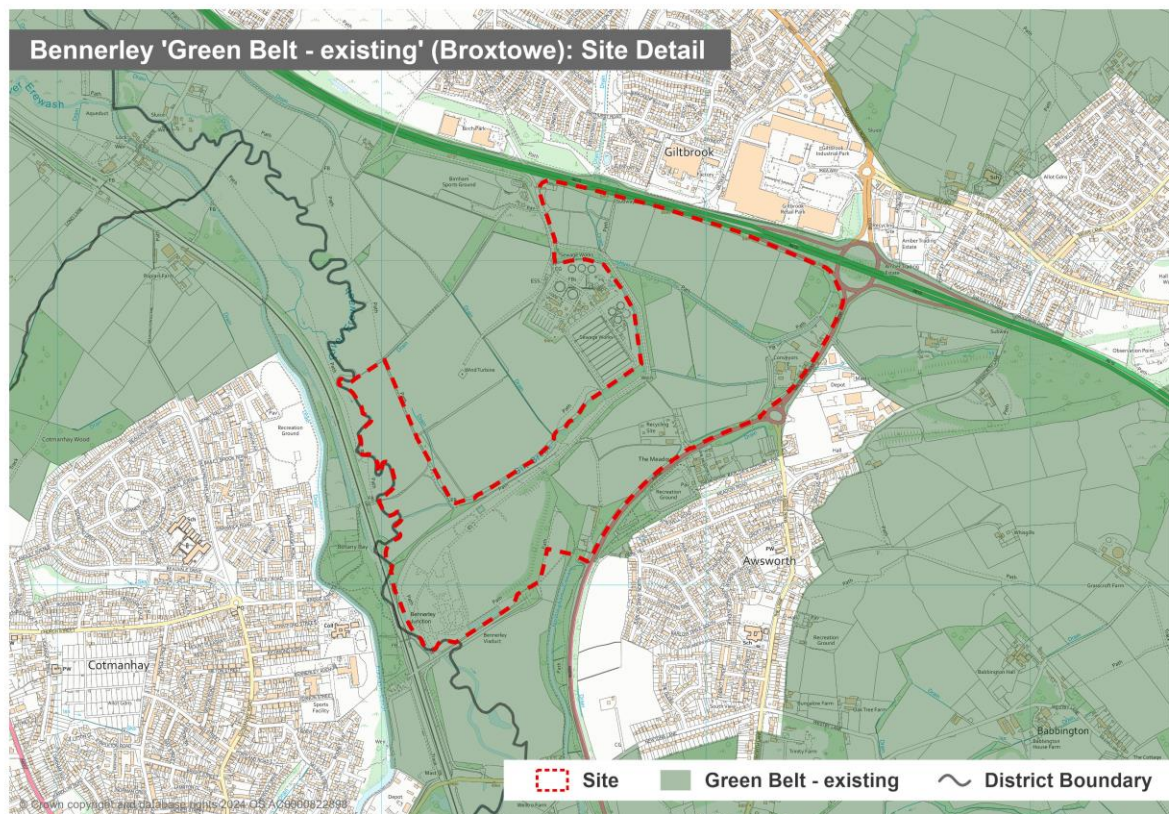
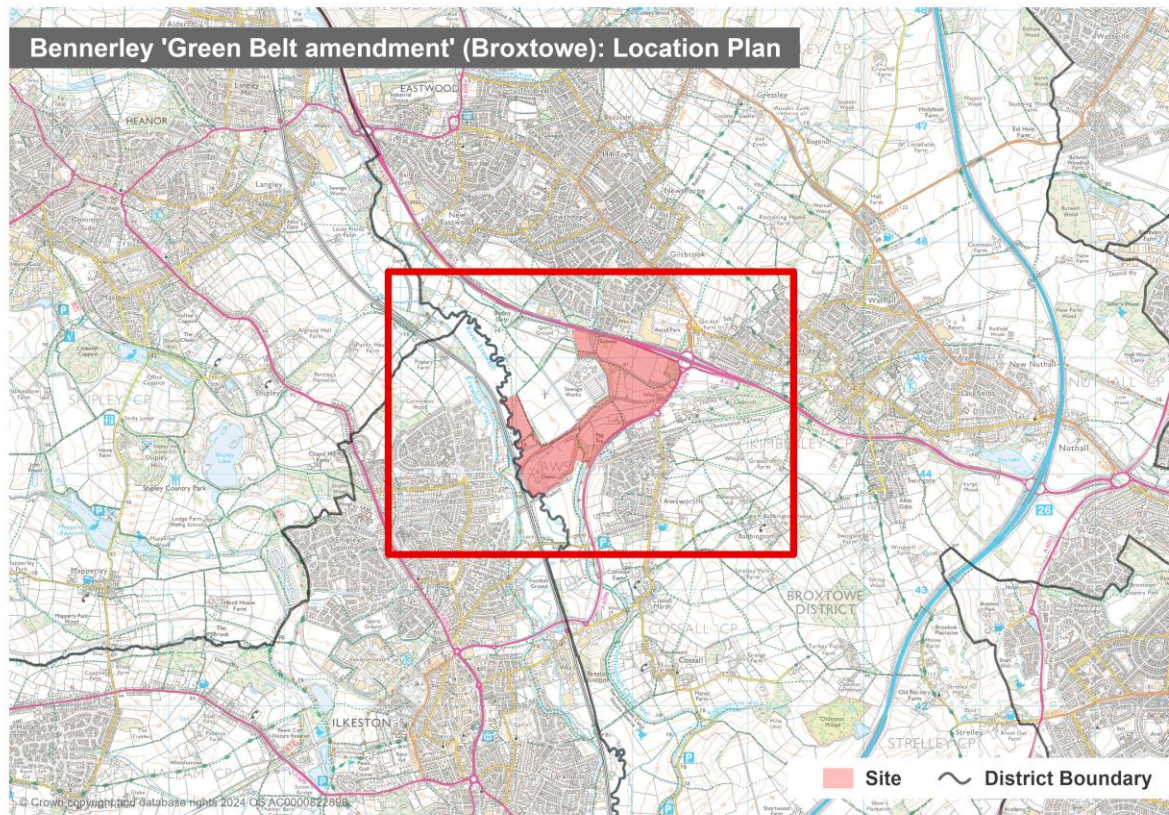
The emerging Greater Nottingham Strategic Plan contains policies for the strategic site allocations at Bennerley and Toton/Chetwynd in Broxtowe Borough. Bennerley has been removed from the Green Belt and the Green Belt boundary covering the strategic site of Toton/Chetwynd has been amended. As part of this, the site boundaries have been defined and these are shown in the plan set out in the Greater Nottingham Strategic Plan.

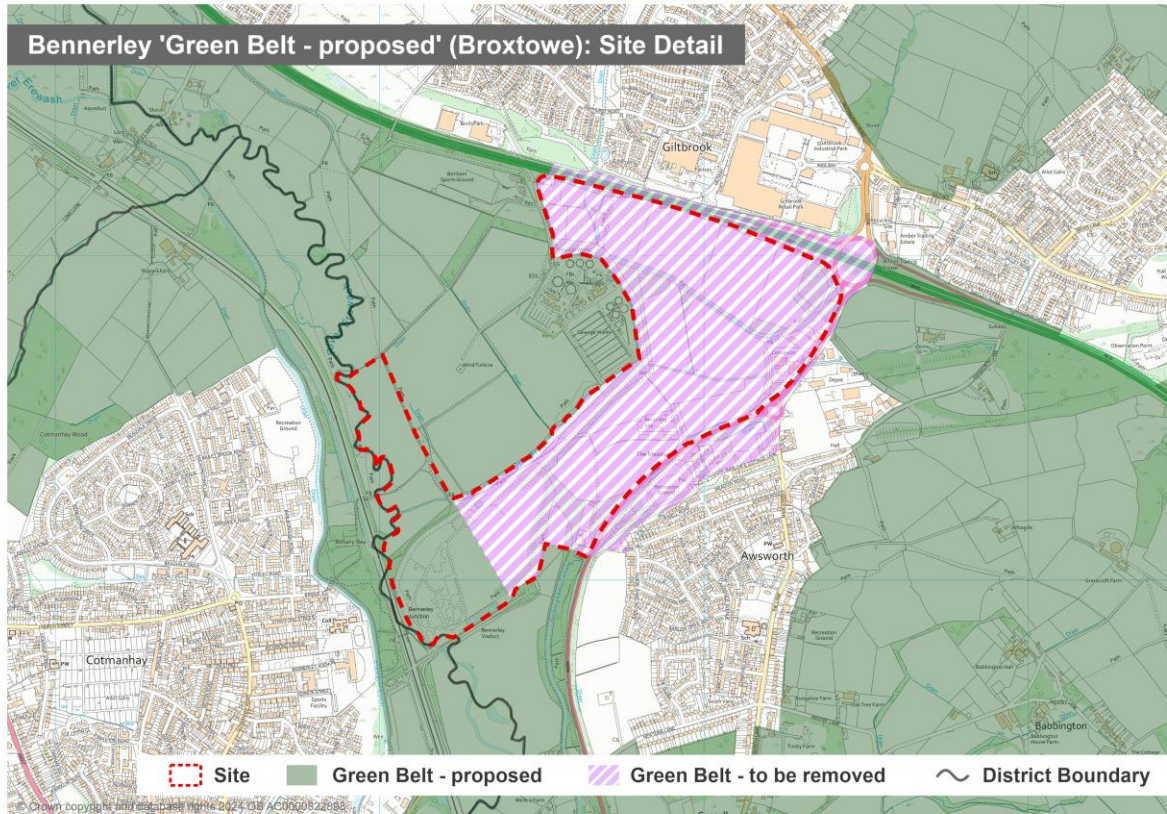
This document therefore indicates geographically the Green Belt changes and the site boundaries of the proposed strategic allocations at Bennerley and Toton/Chetwynd identified in the Greater Nottingham Strategic Plan.

¹ Regulation 22 (1) (b) of the Town and Country Planning (Local Planning) (England) Regulations 2012

Bennerley Green Belt deletion

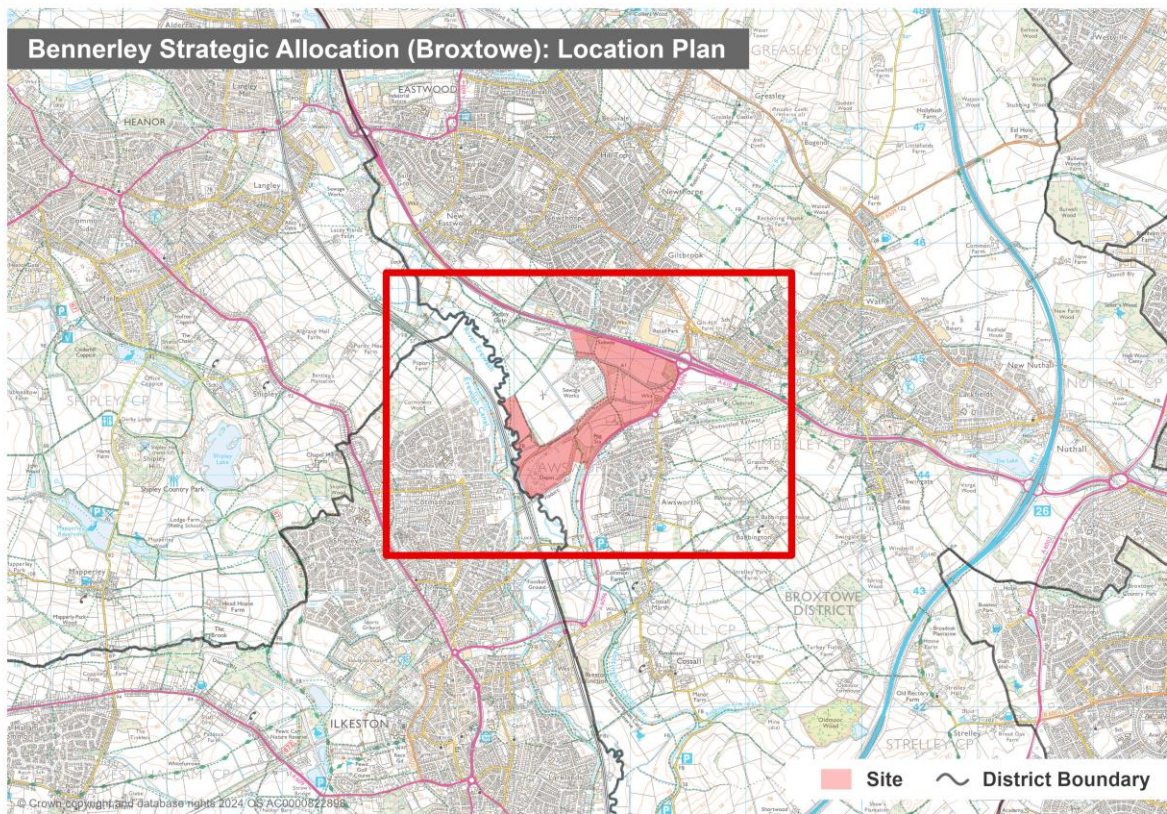
The location of the Bennerley Green Belt deletion is shown below.



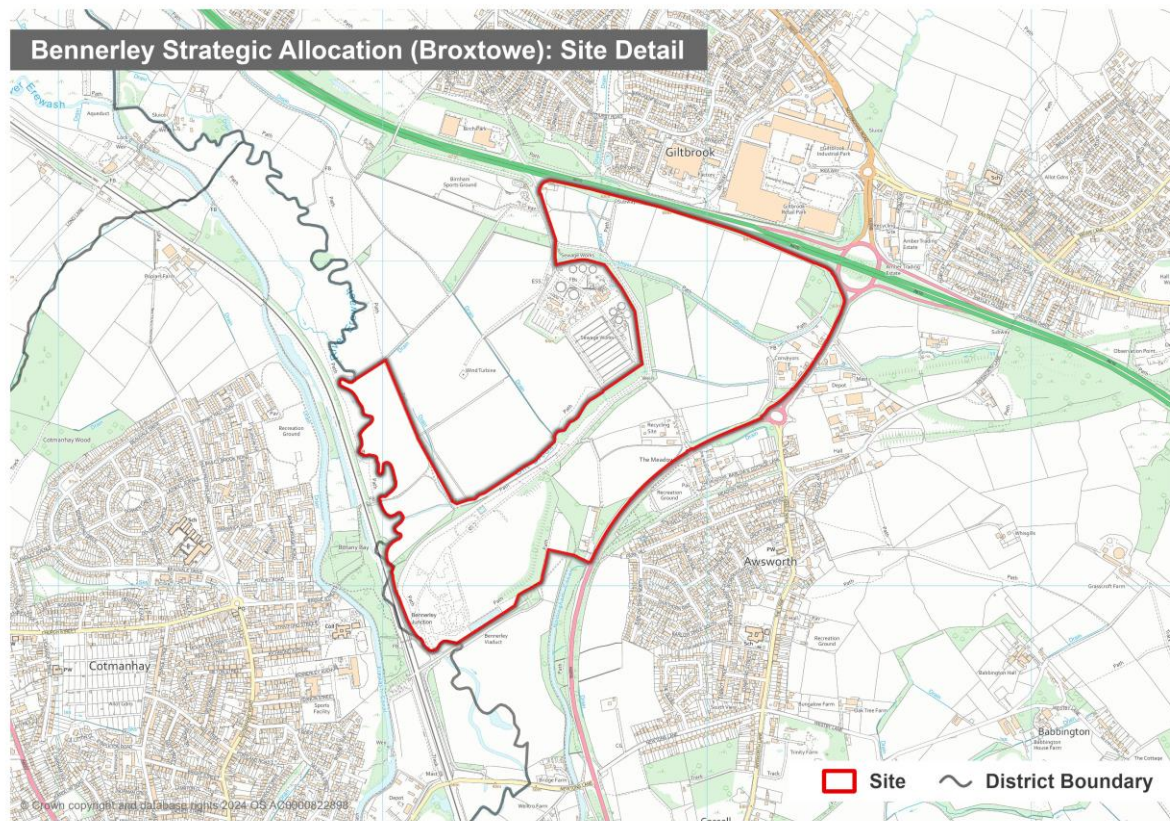


Bennerley new site

The location of the Bennerley site is shown below.

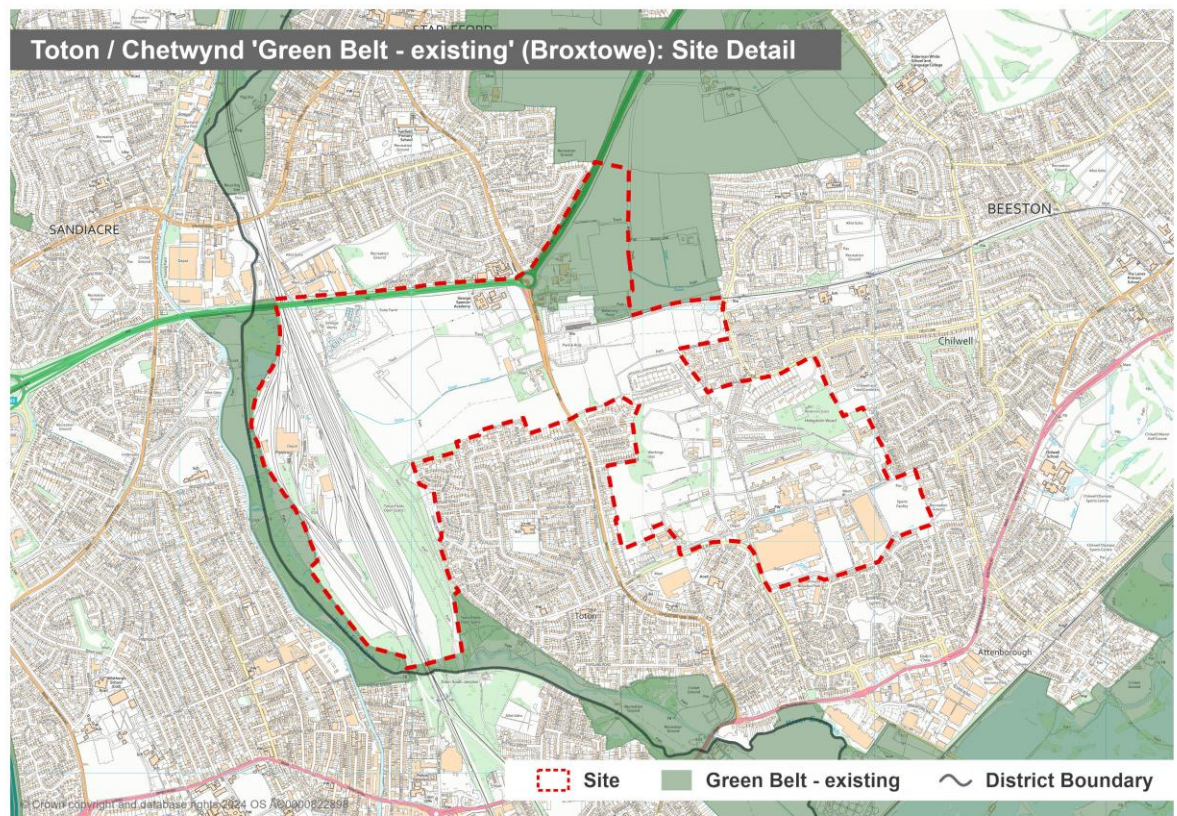
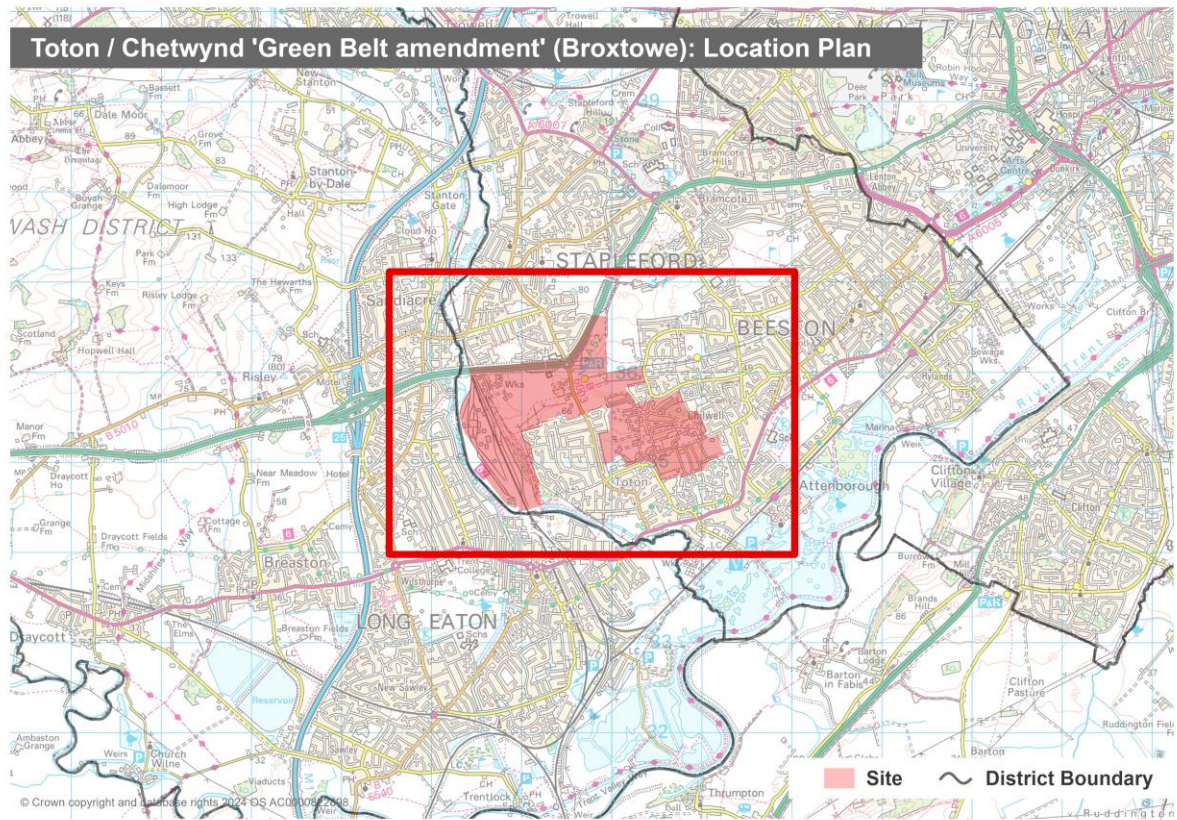


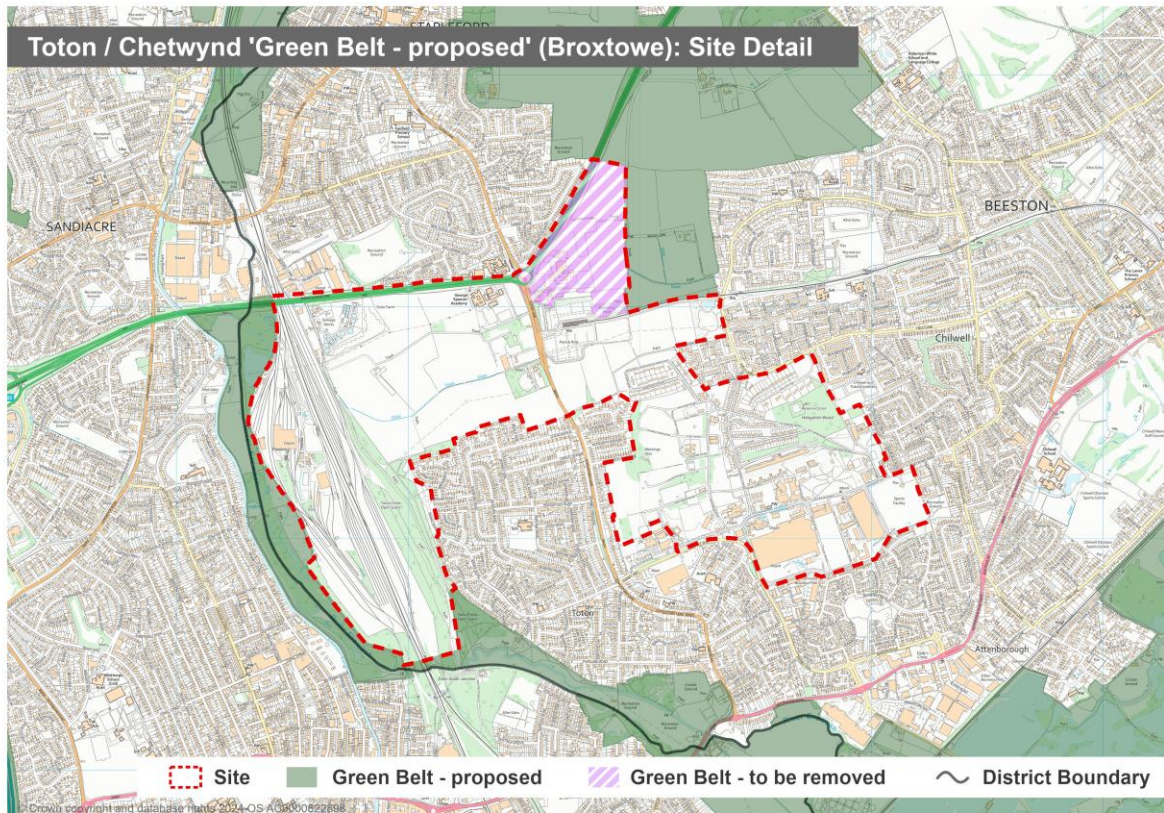
Inset Plan (Proposed)



Toton/Chetwynd Green Belt amendment

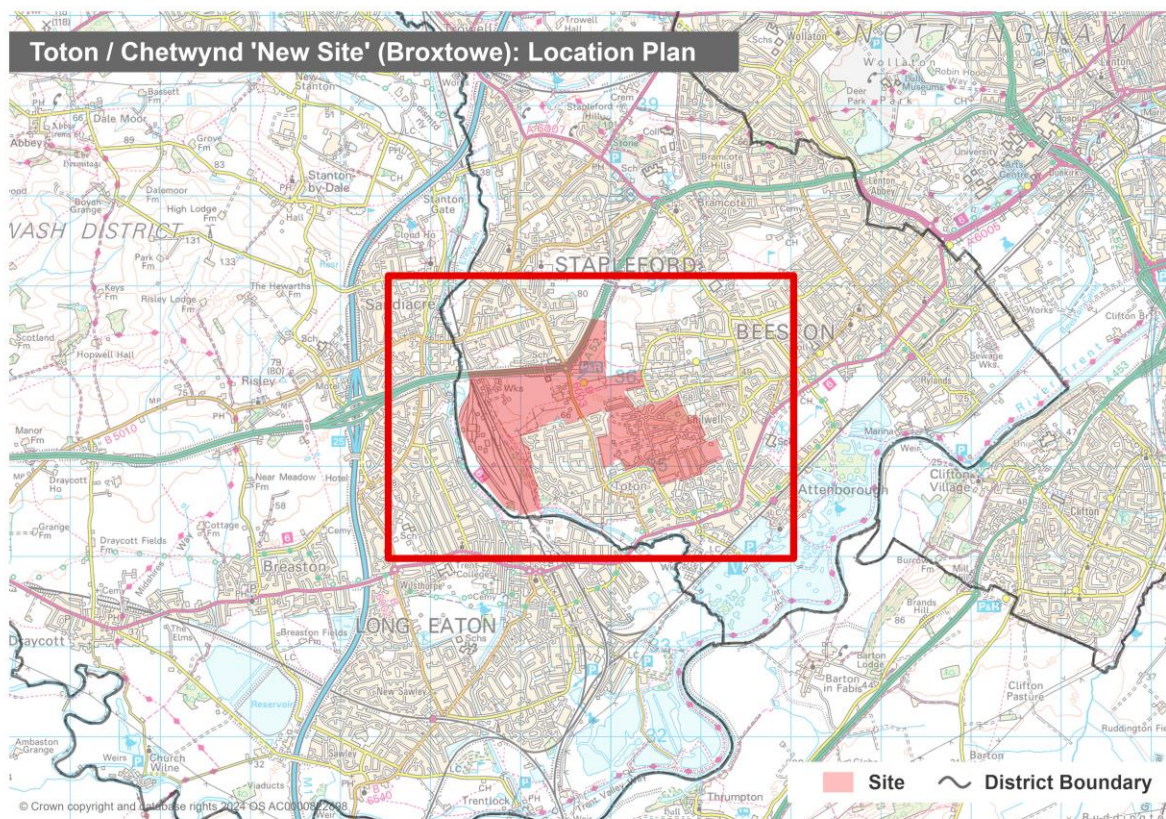
The location of the Toton/Chetwynd Green Belt amendment is shown below.



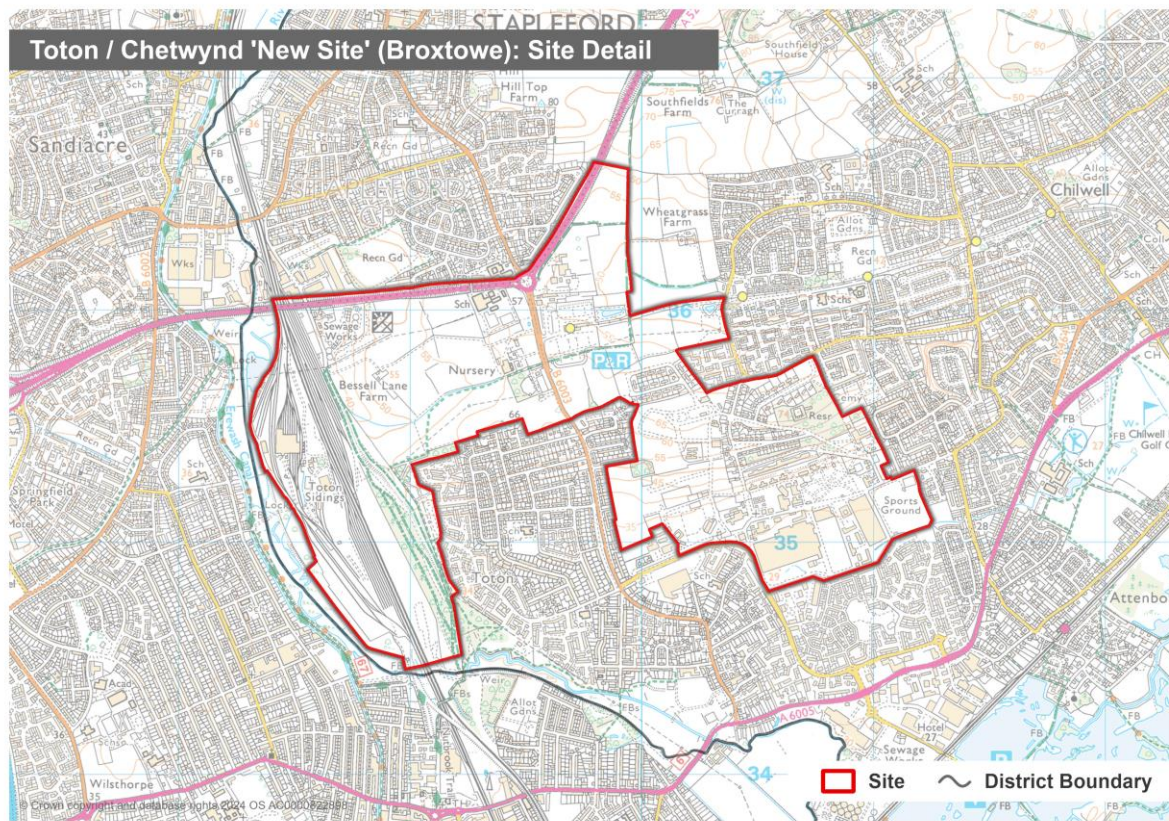


Toton/Chetwynd New site

The location of the Toton/Chetwynd new site is shown below.



Toton/Chetwynd new site (Proposed)



Policies Map Changes for Nottingham City Council

Nottingham City Council has a two-part local plan. The Aligned Core Strategy, adopted 8th September 2014, allocated sites for strategic development. Alongside preparation of the Aligned Core Strategy, Nottingham City Council published a document² to identify how the adopted policies map in place at the time (comprising part of the Local Plan) would be altered by the strategic allocations contained within its policies and designations.

Nottingham City Council Local Planning Document

The Local Planning Document comprises part 2 of the Council's Local Plan and includes the current policies map, to show the application of policies and designations contained in both the part 1 and part 2 local plan.

Greater Nottingham Strategic Plan

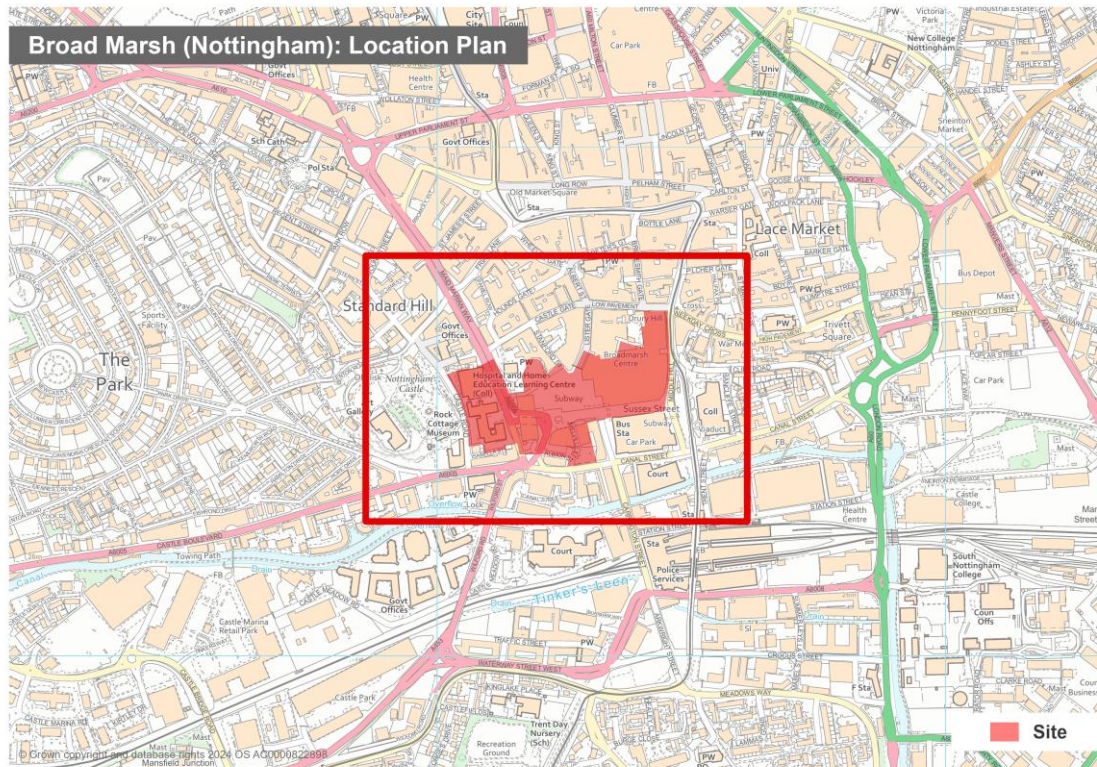
The emerging Greater Nottingham Strategic Plan contains a policy for the strategic site allocation at Broad Marsh in Nottingham City. As part of this, the site boundary has been defined and this is shown in the plan set out in the Greater Nottingham Strategic Plan.

This document therefore indicates geographically the site boundary of the proposed strategic allocations at Broad Marsh identified in the Greater Nottingham Strategic Plan.

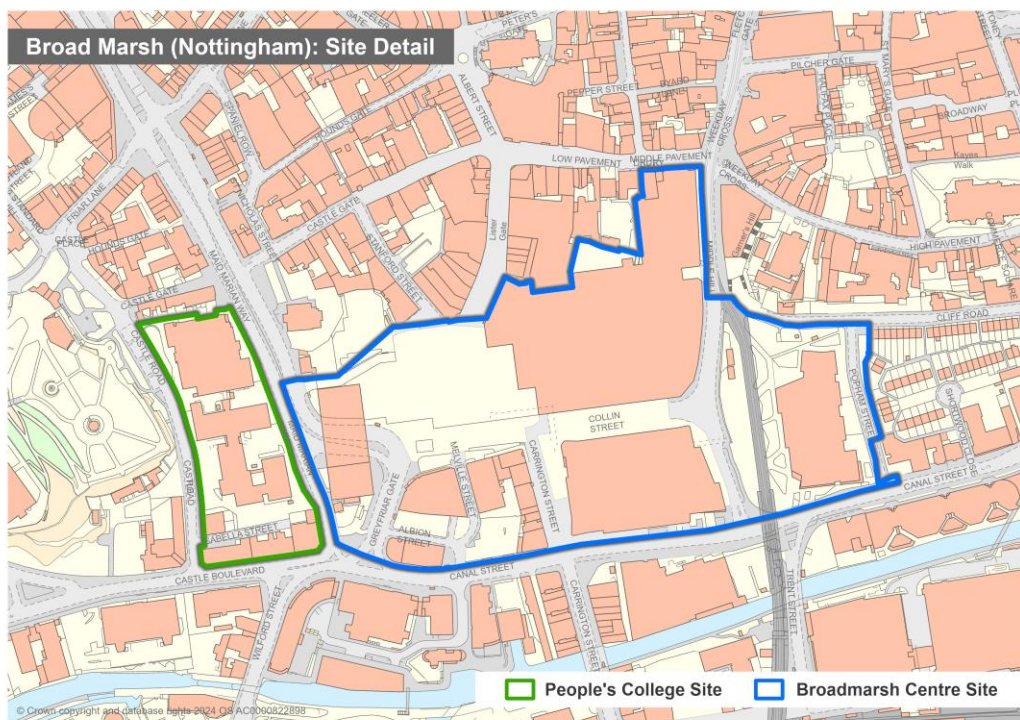
² Regulation 22 (1) (b) of the Town and Country Planning (Local Planning) (England) Regulations 2012

Broad Marsh

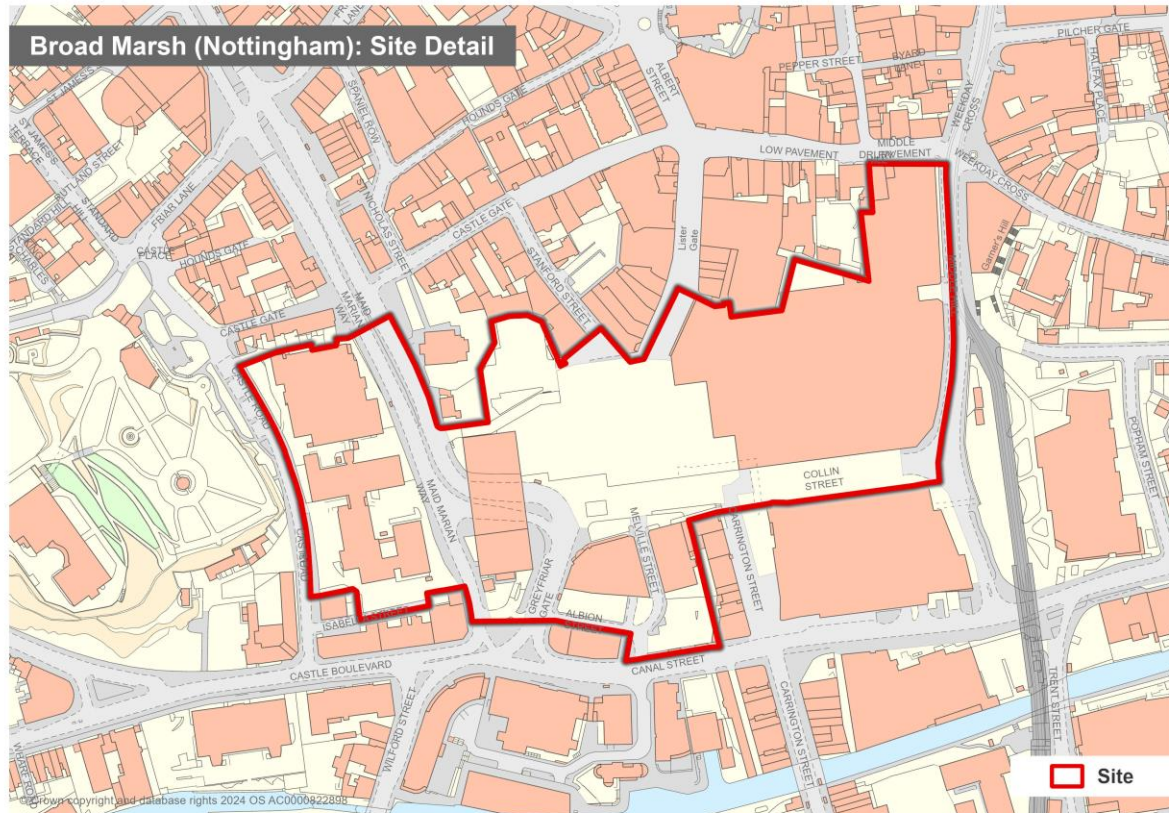
The location of the Broad Marsh is shown below. It amends and combines the boundaries of SR57 Castle Quarter, Maid Marian Way - College Site (former People's College site) and SR58 into Broadmarsh Centre and surrounding area.



Inset Plan (existing)



Inset Plan (proposed)



Policies Map Changes for Rushcliffe Borough Council

Rushcliffe Borough Council has a two-part local plan. The Rushcliffe Core Strategy, adopted 22nd December 2014, allocated sites for strategic development. Alongside preparation of the Core Strategy, Rushcliffe Borough Council published a document³ to identify how the adopted policies map in place at the time (comprising part of the Local Plan) would be altered by the strategic allocations contained within its policies and designations.

Rushcliffe Borough Council Local Plan Part 2: Land and Planning Policies

Local Plan Part 2: Land and Planning Policies includes the current policies map, to show the application of policies and designations contained in both the part 1 and part 2 local plan.

Greater Nottingham Strategic Plan

The emerging Greater Nottingham Strategic Plan contains policies for a strategic site allocation at the former Ratcliffe on Soar Power Station in Rushcliffe Borough. As part of this, the site boundary has been defined and this is shown in the Greater Nottingham Strategic Plan. The Green Belt covering the Former Ratcliffe on Soar Power Station site has been deleted.

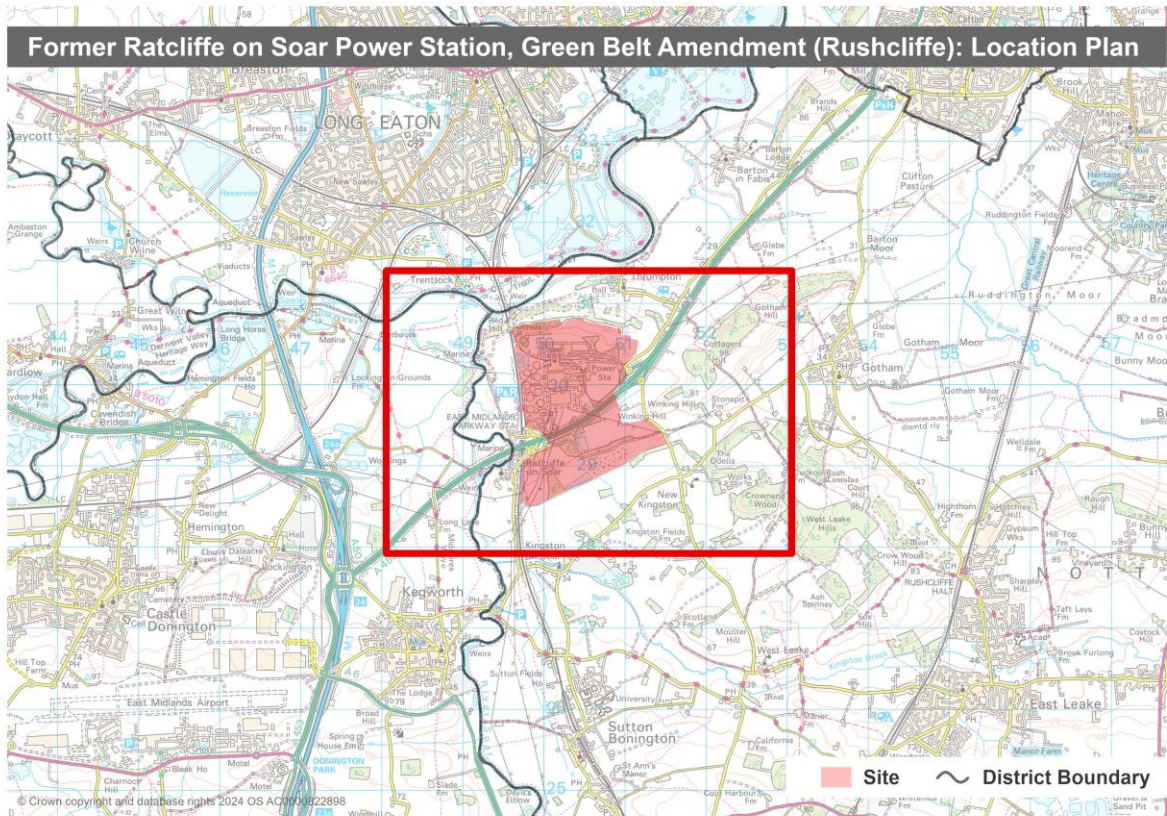
This document therefore indicates geographically the site boundary of the proposed strategic allocation at the Former Ratcliffe on Soar Power Station site identified in the Greater Nottingham Strategic Plan. Additionally, West Bridgford centre designation has changed from a District to a Town Centre

Former Ratcliffe on Soar Power Station site Green Belt deletion

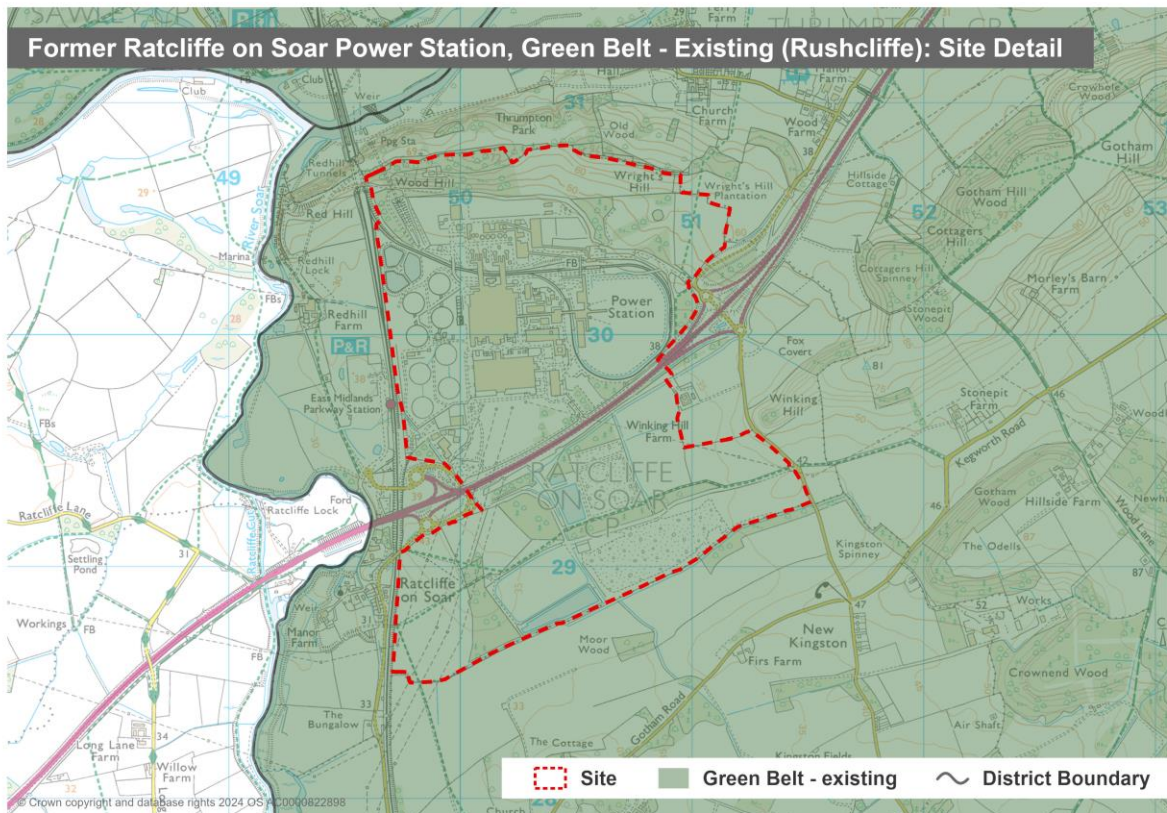
The location of the Former Ratcliffe on Soar Power Station Green Belt deletion is shown below.

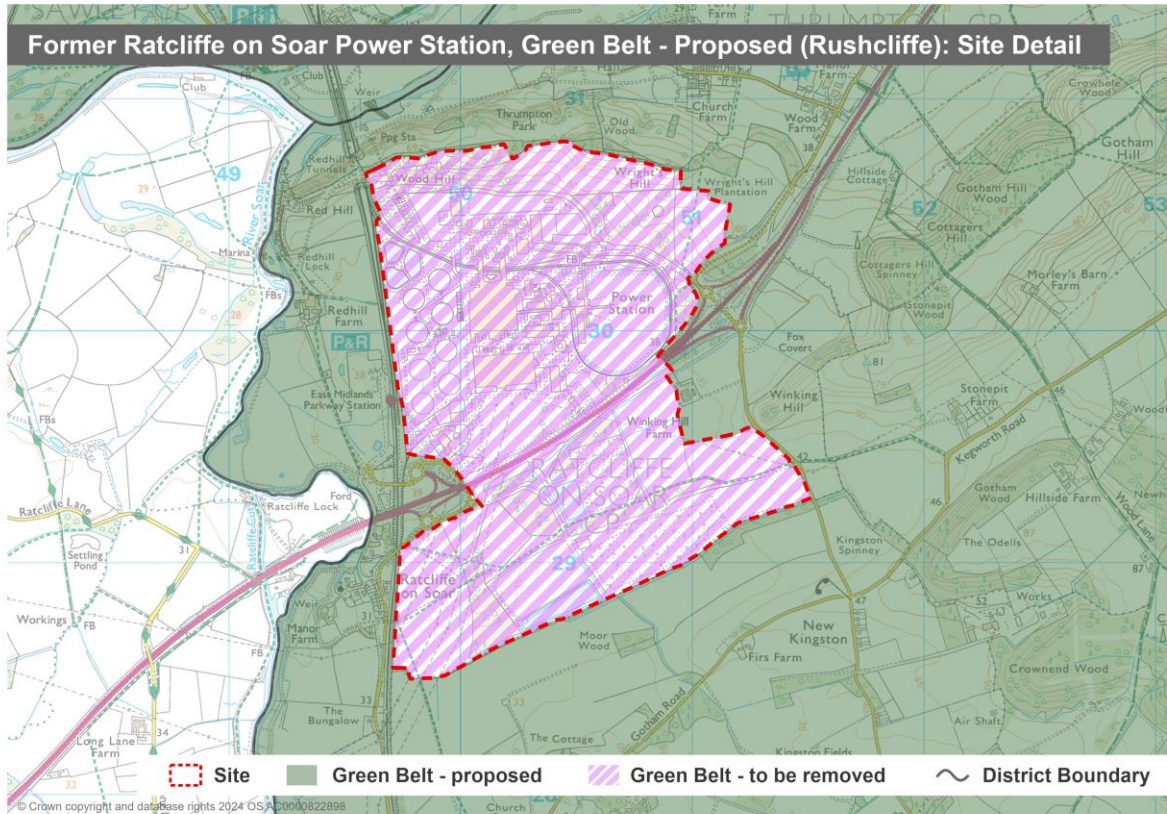
³ Regulation 22 (1) (b) of the Town and Country Planning (Local Planning) (England) Regulations 2012

Former Ratcliffe on Soar Power Station, Green Belt Amendment (Rushcliffe): Location Plan



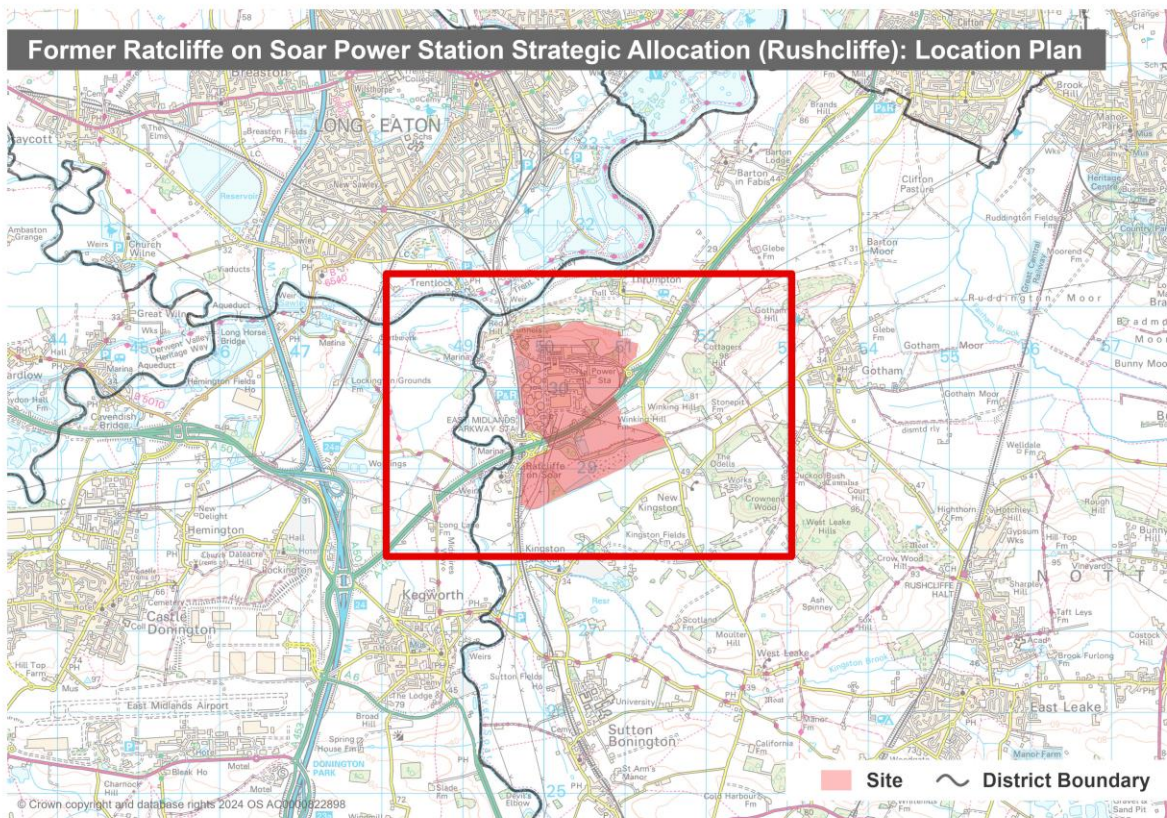
Former Ratcliffe on Soar Power Station, Green Belt - Existing (Rushcliffe): Site Detail



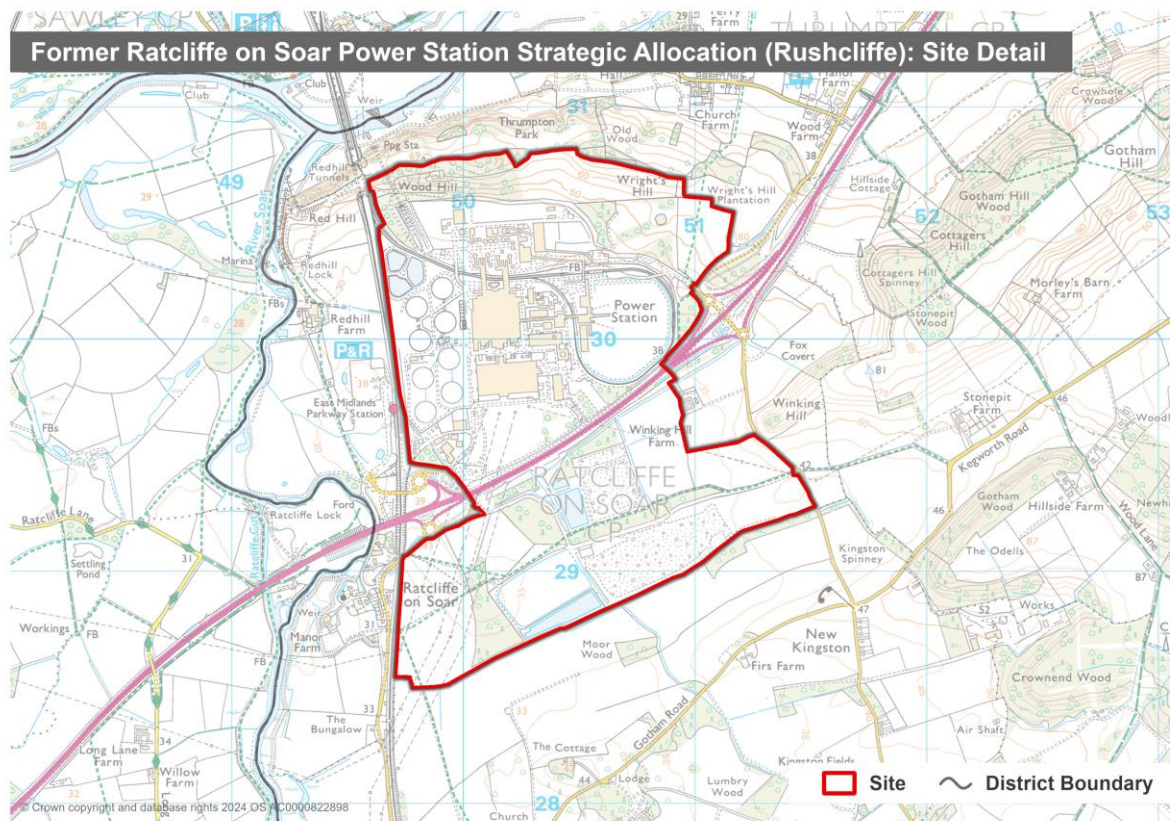


Former Ratcliffe on Soar Power Station site

The location of the Former Ratcliffe on Soar Power Station site is shown below.

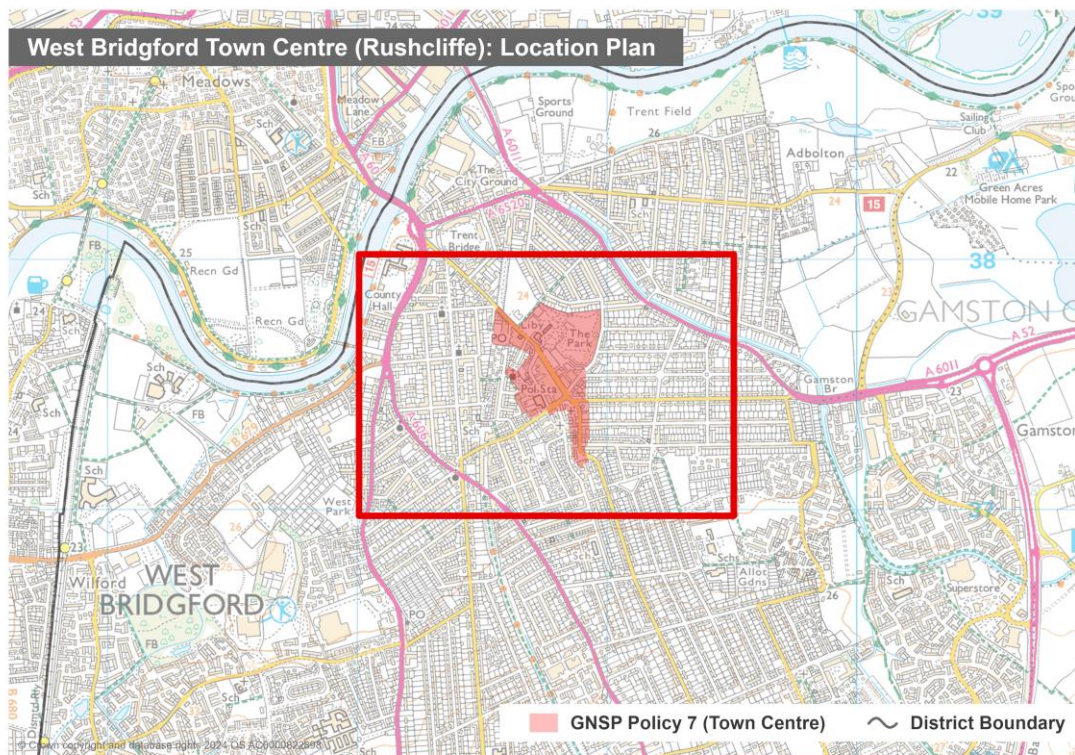


Inset Plan (Proposed)

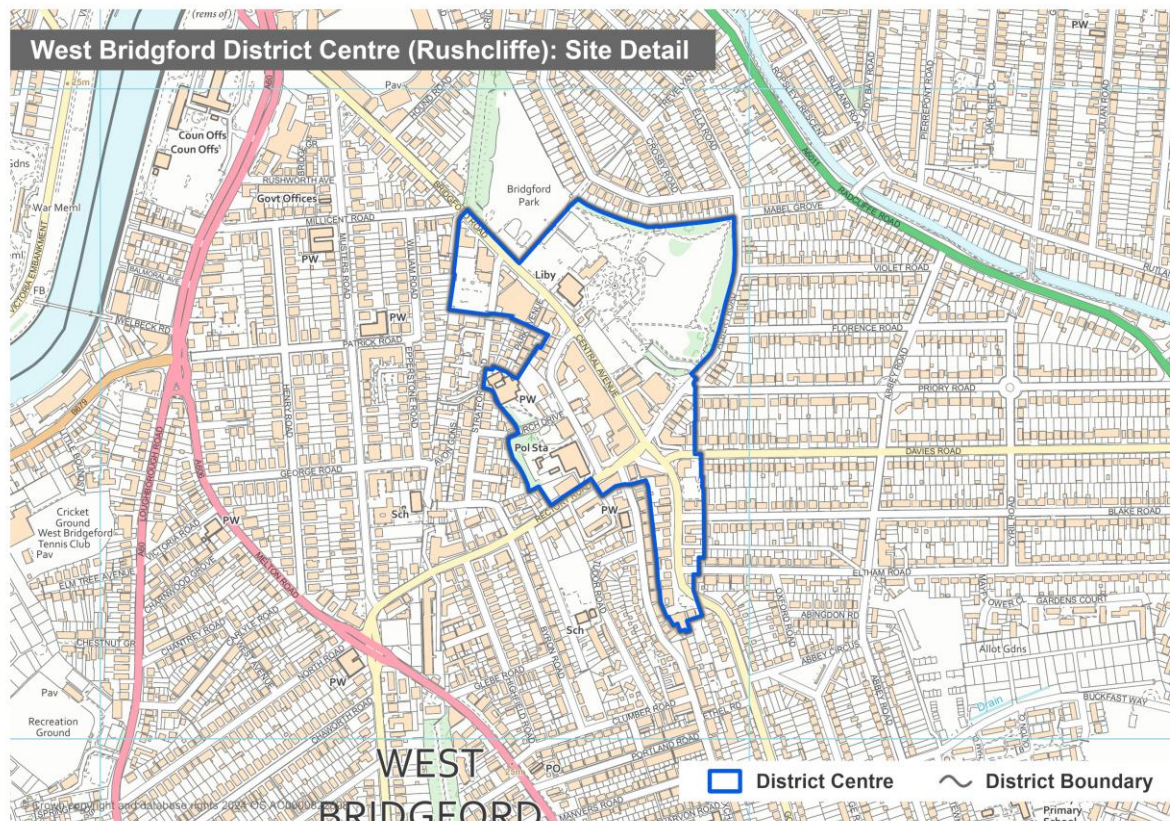


West Bridgford centre designation change from a District to a Town Centre

The location of the West Bridgford centre is shown below.



Inset Plan (Existing)



Inset Plan (Proposed)

